



Louisiana Senate Finance Committee



FY26 Executive Budget

13 – Department of Environmental Quality

April 2025

Senator Cameron Henry, President
Senator Glen Womack, Chairman



FY26 Recommended Budget

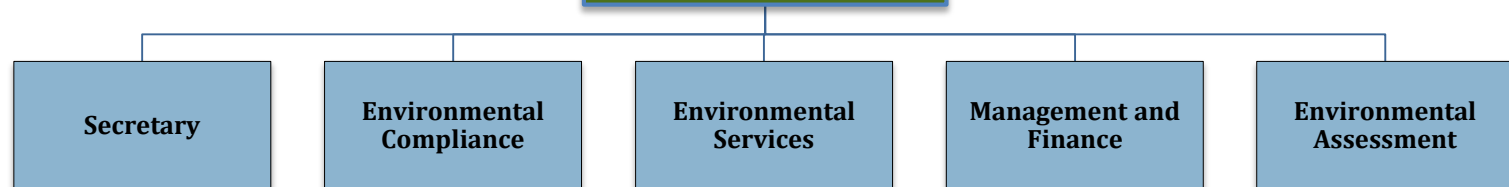
Schedule 13 — Environmental Quality Agencies

Departmental mission — “The mission of the Department of Environmental Quality is to provide service to the people of Louisiana through comprehensive environmental protection in order to promote and protect health, safety and welfare while considering sound policies regarding employment and economic development.”



**Aurelia S. Giacometto,
Secretary**

**13-856
Office of
Environmental Quality**





Environmental Quality

FY26 Program Descriptions by Agency



Office of the Secretary

- Audit Services
- Legal Affairs
- Executive Administration
- Business & Community Outreach
- Communications
- Criminal Investigations

Office of Environmental Compliance

- Surveillance
- Enforcement
- Emergency & Radiological Services.

Office of Environmental Services

- Air Permits Division
- Water Permits Division
- Waste Permits Division
- Public Participation & Permits Support Division

Office of Management and Finance

- Financial Services
- Human Resources
- Waste Tires (OMF-Payments)
- OMF Support & Department Wide Costs
- Technology Service and Records Management

Office of Environmental Assessment

- Air Planning and Assessment
- Water Planning and Assessment
- Remediation
- Underground Storage Tanks





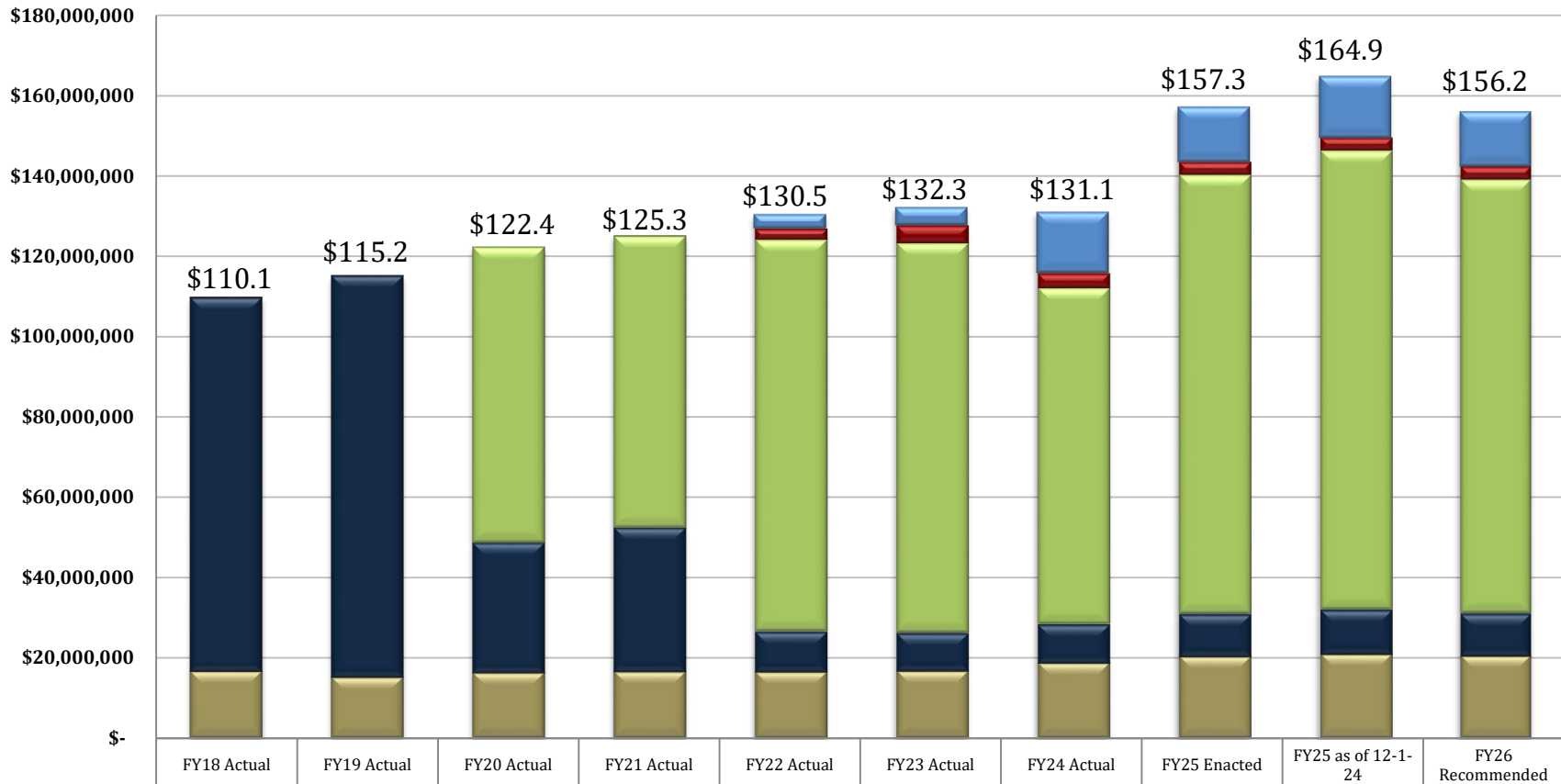
Environmental Quality

Changes in Funding since FY18

Total Budget by Fiscal Year and Means of Finance (in \$ millions)

Change from Actual to Recommended for FY18 to FY26 is +41.9%.

Change from Actual to Actual for FY18 to FY24 is +19.1%.



SGF	\$-	\$-	\$-	\$-	\$3,529,624	\$4,568,830	\$15,229,685	\$13,853,948	\$15,482,342	\$13,853,948
IAT	\$240,882	\$35,773	\$20,572	\$168,929	\$2,776,610	\$4,476,431	\$3,748,562	\$3,239,295	\$3,239,295	\$3,239,295
FSGR	\$19,242	\$20,080	\$73,386,764	\$72,393,734	\$97,498,464	\$96,949,300	\$83,573,068	\$109,046,620	\$113,981,858	\$107,776,535
STAT DED	\$93,177,114	\$99,953,114	\$32,648,120	\$36,117,844	\$10,194,079	\$9,649,921	\$9,897,939	\$10,873,471	\$11,321,089	\$10,873,471
FED	\$16,627,814	\$15,212,769	\$16,312,783	\$16,575,815	\$16,536,806	\$16,696,437	\$18,698,993	\$20,290,956	\$20,928,520	\$20,425,956



Environmental Quality

Significant Budget Adjustments Recommended for FY26

State General Fund (Direct)	Interagency Transfers	Fees and Self-generated Revenues	Statutory Dedications	Federal Funds	Total	T.O.	Adjustment
\$15,482,342	\$3,239,295	\$113,981,858	\$11,321,089	\$20,928,520	\$164,953,104	712	FY25 Existing Operating Budget as of 12-1-24
\$0	\$0	\$1,109,800	\$0	\$0	\$1,109,800	0	Acquisitions & Major Repairs
\$0	\$0	(\$65,509)	\$0	\$0	(\$65,509)	0	Administrative Law Judges
\$0	\$0	(\$1,610,450)	\$0	\$0	(\$1,610,450)	0	Attrition Adjustment
\$0	\$0	\$6,636	\$0	\$0	\$6,636	0	Capitol Park Security
\$0	\$0	(\$3,948)	\$0	\$0	(\$3,948)	0	Capitol Police
\$0	\$0	\$12,997	\$0	\$0	\$12,997	0	Civil Service Fees
\$0	\$0	\$268,577	\$0	\$0	\$268,577	0	Civil Service Training Series Adjustment
\$0	\$0	\$217,478	\$0	\$0	\$217,478	0	Group Insurance Rate Adjustment for Active Employees
\$0	\$0	\$173,600	\$0	\$0	\$173,600	0	Group Insurance Rate Adjustment for Retirees
\$0	\$0	\$5,607	\$0	\$0	\$5,607	0	Legislative Auditor Fees
\$0	\$0	\$4,199	\$0	\$0	\$4,199	0	Maintenance in State-owned Buildings
\$0	\$0	\$1,975,843	\$0	\$0	\$1,975,843	0	Market Rate Salary Adjustment - Classified
\$0	\$0	(\$2,109,000)	\$0	\$0	(\$2,109,000)	0	Non-recurring Acquisitions & Major Repairs
(\$1,628,394)	\$0	(\$4,935,238)	(\$447,618)	(\$637,564)	(\$7,648,814)	0	Non-recurring Carryforwards
\$0	\$0	(\$34,891)	\$0	\$0	(\$34,891)	0	Office of State Procurement
\$0	\$0	(\$1,007,638)	\$0	\$0	(\$1,007,638)	0	Office of Technology Services (OTS)
\$0	\$0	\$737,732	\$0	\$0	\$737,732	0	Related Benefits Base Adjustment
\$0	\$0	(\$10,269)	\$0	\$0	(\$10,269)	0	Rent in State-owned Buildings
\$0	\$0	(\$782,424)	\$0	\$0	(\$782,424)	0	Retirement Rate Adjustment
\$0	\$0	(\$20,712)	\$0	\$0	(\$20,712)	0	Risk Management
\$0	\$0	\$1,352,630	\$0	\$0	\$1,352,630	0	Salary Base Adjustment
\$0	\$0	\$615	\$0	\$0	\$615	0	State Treasury Fees
\$0	\$0	(\$2,728)	\$0	\$0	(\$2,728)	0	UPS Fees
(\$1,628,394)	\$0	(\$4,717,093)	(\$447,618)	(\$637,564)	(\$7,430,669)	0	Total Statewide Adjustments
\$0	\$0	\$0	\$0	\$0	\$0	0	Total Means of Financing Adjustments
\$0	\$0	(\$1,488,230)	\$0	\$135,000	(\$1,353,230)	0	Total Other Adjustments
\$13,853,948	\$3,239,295	\$107,776,535	\$10,873,471	\$20,425,956	\$156,169,205	712	Total FY26 Recommended Budget
(\$1,628,394)	\$0	(\$6,205,323)	(\$447,618)	(\$502,564)	(\$8,783,899)	0	Total Adjustments (Statewide and Agency-Specific)



Environmental Quality

Non-Statewide Budget Adjustments Recommended for FY26

Other Adjustments

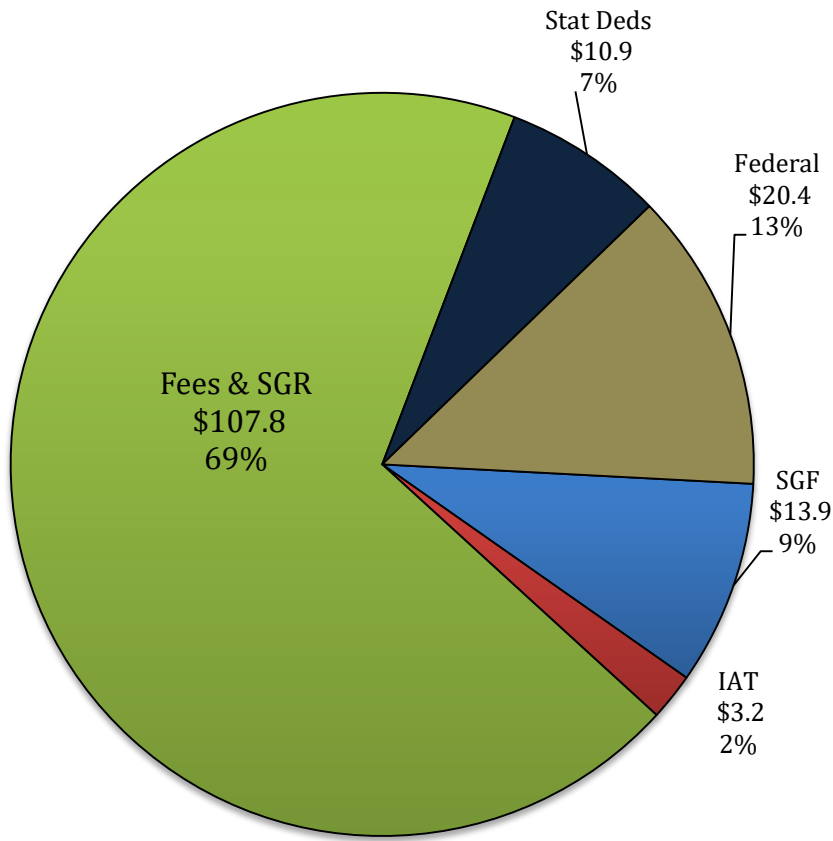
State General Fund (Direct)	Interagency Transfers	Fees and Self-generated Revenues	Statutory Dedications	Federal Funds	Total	T.O.	Adjustment
\$0	\$0	(\$3,310,845)	\$0	\$0	(\$3,310,845)	0	Decrease in the Volkswagen Settlement contracts due to the projects nearing completion. Fees and Self-generated Revenues out of the Environmental Trust Dedicated Fund Account.
\$0	\$0	(\$25,000)	\$0	\$0	(\$25,000)	0	Decrease to match department's current projected telecommunications expenditures. Fees and Self-generated Revenues out of the Environmental Trust Dedicated Fund Account.
\$0	\$0	\$1,331,721	\$0	\$0	\$1,331,721	0	Increase for clean-up of unauthorized waste tire piles. Fees and Self-generated Revenues out of the Waste Tire Management Dedicated Fund Account.
\$0	\$0	\$5,000	\$0	\$0	\$5,000	0	Increase for court reporting services used at public meetings. Fees and Self-generated Revenues out of the Environmental Trust Dedicated Fund Account.
\$0	\$0	\$300,000	\$0	\$0	\$300,000	0	Increase for legal contracts in the Office of the Secretary Program. Fees and Self-generated Revenues out of the Environmental Trust Dedicated Fund Account.
\$0	\$0	\$305,000	\$0	\$135,000	\$440,000	0	Increase for the renewal of the air quality labs and laboratory analysis contracts. Fees and Self-generated Revenues out of the Environmental Trust Dedicated Fund Account and Federal Funds from the Environmental Protection Agency.
\$0	\$0	\$20,000	\$0	\$0	\$20,000	0	Increase in travel budget funding due to more anticipated conference attendance and visits to the various sites and regional offices. Fees and Self-generated Revenues out of the Environmental Trust Dedicated Fund Account.
\$0	\$0	(\$114,106)	\$0	\$0	(\$114,106)	0	Reduction in the interagency contract for the Louisiana Watershed Initiative through the Office of Community Development.
\$0	\$0	(\$1,488,230)	\$0	\$135,000	(\$1,353,230)	0	Total Other Adjustments



Environmental Quality

FY26 Recommended Means of Finance

**FY26 Recommended
Total Means of Finance**
(In Millions)



Total \$156.2 m.

Non-SGF Sources of Funding:

Non-State General Fund sources of funding for the Department of Environmental Quality are derived from Interagency Transfers, Fees and Self-generated Revenues, Statutory Dedications, and Federal Funds.

The **Interagency Transfers** are from CPRA for BP Natural Resource Damage Assessment (NRDA) work. DEQ bills CPRA quarterly for these charges. IAT Transfers also include funds from the Office of Community Development (OCD) for the Louisiana Watershed Initiative (LWI).

Fees and Self-generated Revenues are derived from the sale of regulations, manifest forms, and photocopies. The Statutorily Dedicated Environmental Trust Fund was re-classified as Fees and Self-generated Revenues in accordance with Act 404 of the 2019 Regular Session. The Lead Hazard Reduction Fund, the Motor Fuels Underground Tank Fund, and the Waste Tire Management Fund were re-classified as Fees and Self-generated Revenues in accordance with Act 114 of the 2021 Regular Legislative Session.

Statutory Dedications, which make up seven percent of DEQ's total means of finance, are derived from the Oil Spill Contingency Fund, Hazardous Waste Site Cleanup Fund, and the Clean Water State Revolving Fund.

Federal Funds are derived from grants issued by the Environmental Protection Agency, U.S. Department of Energy, and the U.S. Department of Defense.



Environmental Quality Dedicated Funds FY24, FY25, and FY26 Recommended

Dedicated Funds	Source of Funding	FY24 Actual	FY25 EOB	FY26 Recommended
Clean Water State Revolving Fund	Federal grants	\$3,500,626	\$3,500,626	\$3,500,626
Brownfields Cleanup Revolving Loan Fund	Federal or state grants or state appropriation.	\$226	\$50,000	\$50,000
Hazardous Waste Site Cleanup Fund	Judgments, settlements, assessments of civil or criminal penalties, Hazardous Disposal Tax collected by the Department of Revenue.	\$6,251,517	\$7,543,489	\$7,095,871
Oil Spill Contingency Fund	Settlements and judgements.	\$145,570	\$226,974	\$226,974
TOTALS		\$9,897,939	\$11,321,089	\$10,873,471

The **Lead Hazard Reduction Fund**, the **Motor Fuels Underground Tank Fund**, and the **Waste Tire Management Fund** were re-classified as Fees and Self-generated Revenues in accordance with Act 114 of the 2021 Regular Legislative Session.



Categorical Expenditures

Examples of Categories

Departments expend funding in the five major categories listed below.

Personal Services

- Salaries – Regular, overtime, and termination pay for Classified and Unclassified personnel.
- Other Compensation – Wages, student labor, compensation for board members and/or board of trustees, evening instruction, university instructors, etc.
- Related Benefits – Retirement contributions, post-retirement contributions/benefits, FICA tax, Medicare tax, group insurance contributions, compensated absences, other related benefits, taxable fringe benefits, etc.

Total Operating Expenses

- Travel – In-state and Out-of-state, including meal reimbursement.
- Operating Services – Advertising, printing, insurance, maintenance, rentals, data processing, internet costs, dues and subscriptions, mail delivery, telephones, data lines, vehicle tracking and telematics, utilities, depreciation, amortization, banking services, credit card fees, etc.
- Supplies – office supplies and equipment, computers, clothing and uniforms, medical, pharmaceutical, food, automotive, repair and maintenance, software, etc.

Professional Services – Accounting, auditing, management consulting, engineering, architectural, legal, medical and dental, veterinary, information technology, etc.

Total Other Charges

- Other Charges – Aid to school boards, local government, etc.; public assistance; miscellaneous charges; judgments, fines, and penalties; interest on judgments; punitive/compensatory damages; OC personal services, operating expenses, professional services; contract attorney expenses; recoupments; furlough; contractual services; interest expense; claim payments; commercial group insurance; reinsurance; loans issued; disbursements; etc.
- Debt Service – Principal, interest, related charges, reserve requirement, amortization, and bond premiums.
- Interagency Transfer Line-Item Expenditure – Any expenses paid for with Interagency Transfers – from commodities and services to equipment.

Acquisitions and Major Repairs

- Acquisitions – Land; buildings; automobiles; aircraft; accessories; equipment; software; hardware; farm and heavy equipment; boats; capital outlay expenditures; construction; etc.
- Major Repairs – Land improvement; buildings; automotive; grounds; boats; aircraft; movable equipment; farm equipment; medical; office; library; education; recreation; communication; other equipment; pollution remediation; etc.



Environmental Quality

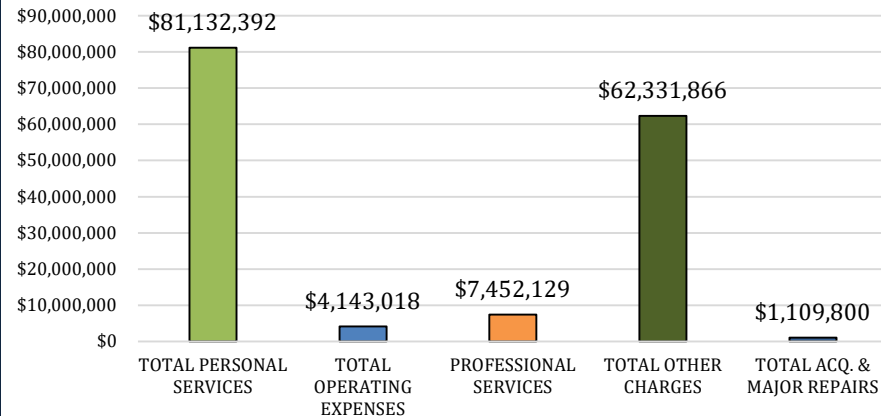
Categorical Expenditures at FY26 Recommended

The largest expenditure category in DEQ for FY26 Recommended is Total Personal Services at 52 percent of the budget.

Within this category, Salaries make up 65 percent of expenditures, while Related Benefits contributes 34 percent.

Total Other Charges, which makes up 40 percent of Total Expenditures, includes funding for Motor Fuels Underground Storage Tank to reimburse Response Action Contractors of eligible tanks for cleanup of leaking underground storage tanks; Legal services; Waste Tire program for payments to permitted processors for proper disposal of collected waste tires; To provide services for investigation, testing, containment, control and cleanup of hazardous waste sites.

FY26 Recommended Expenditures



Categorical Expenditures	FY24 Actual	FY25 Enacted	FY25 EOB as of 12/01/24	FY26 Recommended	Difference FY25 EOB vs. FY26 REC
Salaries	\$47,637,594	\$51,062,280	\$51,062,280	\$52,983,829	\$1,921,549
Other Compensation	\$690,422	\$211,043	\$211,043	\$211,043	\$0
Related Benefits	\$28,349,277	\$27,526,083	\$27,526,083	\$27,937,520	\$411,437
TOTAL PERSONAL SERVICES	\$76,677,293	\$78,799,406	\$78,799,406	\$81,132,392	\$2,332,986
Travel	\$323,681	\$410,443	\$410,443	\$430,443	\$20,000
Operating Services	\$1,942,687	\$2,814,401	\$2,814,401	\$2,814,401	\$0
Supplies	\$828,674	\$898,174	\$898,174	\$898,174	\$0
TOTAL OPERATING EXPENSES	\$3,095,043	\$4,123,018	\$4,123,018	\$4,143,018	\$20,000
PROFESSIONAL SERVICES	\$7,099,183	\$6,821,235	\$7,234,072	\$7,452,129	\$218,057
Other Charges	\$31,065,198	\$47,493,822	\$50,748,032	\$45,514,698	(\$5,233,334)
Debt Service	\$0	\$0	\$0	\$0	\$0
Interagency Transfers	\$11,982,055	\$17,957,809	\$21,212,986	\$16,817,168	(\$4,395,818)
TOTAL OTHER CHARGES	\$43,047,253	\$65,451,631	\$71,961,018	\$62,331,866	(\$9,629,152)
Acquisitions	\$1,229,475	\$2,109,000	\$2,835,590	\$1,109,800	(\$1,725,790)
Major Repairs	\$0	\$0	\$0	\$0	\$0
TOTAL ACQ. & MAJOR REPAIRS	\$1,229,475	\$2,109,000	\$2,835,590	\$1,109,800	(\$1,725,790)
TOTAL EXPENDITURES	\$131,148,247	\$157,304,290	\$164,953,104	\$156,169,205	(\$8,783,899)



Environmental Quality

FY26 Recommended Categorical Expenditures

Office of the Secretary

Interagency Transfers

\$32,826	Administrative Law Judges Fees
\$24,453	Division of Administration - For publication of regulations
\$43,637	Division of Administration - Messenger service fees, mail services, telephone services, and printing services

Professional Services

\$304,750	Legal Services - To provide legal research and consultation for issues, strategy and litigation as required by the Secretary
\$5,000	Court Reporting - Services required to officially record and transcribe testimony and proceedings for discovery, appeals and hearings. This includes litigation and hearings to receive public comments on proposed permits and settlements, rule-making hearings and other scheduled department meetings and hearings

Acquisitions and Major Repairs

\$55,000	Replacement of one (1) vehicle
----------	--------------------------------

Office of Environmental Compliance

Interagency Transfers

\$112,360	Division of Administration - Messenger service fees, mail services, telephone services, and printing services
\$6,250	LSU Radiation Safety Office for Calibration of Survey Meters
\$3,500	Department of Public Safety - Registration fees for vehicles and boats

Professional Services

\$976,999	Laboratory Analysis - Outsourced Analytical Services to provide the analysis of samples collected by the department in support of permitting, surveillance and other department activities
\$780,000	Federal portion of Lab Analysis Contracts
\$30,000	Lab analysis for Mercury Samples

Acquisitions and Major Repairs

\$525,000	Replacement of 11 vehicles
\$203,300	Replacement of various field and testing equipment

Other Charges

\$53,000	Transuranic Waste Shipment - Training of emergency personnel at the state and local levels and preparation of procedures to successfully deal with any radiological emergencies
\$40,000	Multi Purpose Grant for inspection activities



Environmental Quality

FY26 Recommended Categorical Expenditures

Office of Environmental Services

Interagency Transfers

\$47,861 Division of Administration - Messenger service fees, telephone services, and printing services

Professional Services

\$10,000 Court Reporting Services for Public Hearings.

Office of Management and Finance

Interagency Transfers

\$8,056,044 Office of Technology Services (OTS) Fees

\$2,392,882 Division of Administration - Messenger service fees, mail services, telephone services, and printing services

\$343,919 Civil Service Fees

\$4,345 Secretary of State - Archive supplies

\$38,432 Uniform Payroll System (UPS) Fees

\$32,731 Office of State Procurement (OSP) Fees

\$106,013 Legislative Auditor Fees

\$16,520 State Treasury Fees

\$799,949 Office of Risk Management (ORM) Premiums

\$1,721,118 Rent in State-owned Buildings

\$91,156 Maintenance in State-owned Buildings

\$17,687 Capitol Police Fees

\$202,112 Capitol Park Security Fees

\$47,400 Louisiana Property Assistance Agency - GPS for state vehicles

\$199,412 Department of Transportation and Development (Topographic Mapping)

Office of Management and Finance continued...

Professional Services

\$217,712 Medical Exams - To detect possible contamination associated with exposure to materials as a result of work related activities.

\$30,675 Bond Advisor for Loans Program - Legal representation and advice on loans, bond issues, rules and regulations, and policies for the State Revolving Fund (SRF) Programs.

\$1,716,973 Document Management System - Continue the scanning, indexing and electronic storage of all documents submitted to DEQ. This agency wide document management system provides faster processing and a reduction in manual filing of documents.

Other Charges

\$21,249,485 Motor Fuels Underground Storage Tank - To reimburse Response Action Contractors (RACS) for cleanup of program eligible leaking underground storage tanks.

\$186,788 Underground Storage Tank (UST) Operator Training Program

\$13,912,785 Waste Tire Program



Environmental Quality

FY26 Recommended Categorical Expenditures

Office of Environmental Assessment

Interagency Transfers

\$240,000	Department of Public Safety - Vehicle inspection and maintenance program for emissions controls
\$169,234	Louisiana Technical College - Baton Rouge Community College to serve as a challenge station for the public when they have concerns about On-Board Diagnostic test results as required by 40 CFR 51.368(b).
\$1,869,422	Department of Transportation and Development - Volkswagen Contract
\$82,575	Division of Administration - Messenger service fees, mail services, telephone services, and printing services
\$115,330	Agriculture and Forestry - Building rent for Air Field section

Professional Services

\$3,057,334	OCD agreement with LDEQ for Rain Gauge Network
\$81,413	Ozone Episode Index Forecasting
\$74,103	Ambient PM 2.5 Network Operations and Risk Assessment
\$70,000	Conduct Performance Site Audits \$5,000 Environmental Consulting/Certification of OBD Software Updates
\$92,170	Risk Assessment to evaluate conditions and threats to determine their risk to human health and the environment

Acquisitions and Major Repairs

\$85,000	Replacement of two (2) vehicles
\$241,500	Replacement of various field and testing equipment



Environmental Quality

FY26 Recommended Categorical Expenditures

Office of Environmental Assessment continued...

Other Charges

\$900,000	NPS Grants Clean Water Act: Sec. 201(g)(1)(B) Under Sec. 319(h) - This grant provides Louisiana with funds to implement its Non-point Source pollution prevention program which is designed to meet the goals of the Clean Water Act. This funding supports a variety of projects which will implement the milestones of the current management program and will help to address water quality problems in Louisiana.
\$3,552,882	Hazardous Waste Site Cleanup - To provide services for investigation, testing, containment, control, and cleanup for hazardous waste sites; to provide money or services for the state share of matching funds for Environmental Protection Agency (EPA) lead sites.
\$783,350	Gulf Hypoxia Grant BIL funds -This grant will target implementation of a agricultural best management practices within prioritized tracts in northeast LA and will conduct transect monitoring in coastal Louisiana. Best management practices will be targeted within the Lake St. Joseph and Cypress Bayou watersheds to reduce agriculture-induced nutrient loading and provide other water quality improvements. Coastal monitoring will occur along a transect extending from Barataria Pass, LA to the inner shelf of the Gulf of Mexico to inform the interactive effects of multiple ecosystem change drivers (restoration, riverine nutrient loading, hypoxia, climate change) on living resources in the Gulf of Mexico.
\$125,000	106 Monitoring Initiatives Clean Water Act: Sec. 106 - This grant funds ambient water quality monitoring in various ecoregions in Louisiana. LDEQ will collect monitoring data for use in evaluating existing dissolved oxygen criteria and revising criteria as needed. LDEQ will also collect fish samples and conduct a water database implementation needs assessment.
\$100,000	604(b) BIL Grant Statutory Authority is the Clean Water Act Secs 205(j)(1) & (2) and Sec 604(b). This grant supports water quality management planning activities in the Lake Ponchartrain Basin. The funding assists DEQ in developing Total Maximum Daily Loads (TMDL) for maintaining water quality standards and determining the cause of water quality problems.
\$372,118	Compliance Evaluation Inspections - To perform Underground Storage Tank Compliance evaluation inspections. This funding is provided by EPA to meet the recurring inspection requirements of the Energy Act.
\$175,000	Contracts using Hurricane Harvey LUST grant to provide for site assessment and site cleanup projects at underground storage tank sites in areas affected by Hurricane Harvey
\$12,000	Risk Assessment to evaluate conditions and threats to determine their risk to human health and the environment.



Environmental Quality

FY26 Recommended Categorical Expenditures

Office of Environmental Assessment continued...

Other Charges

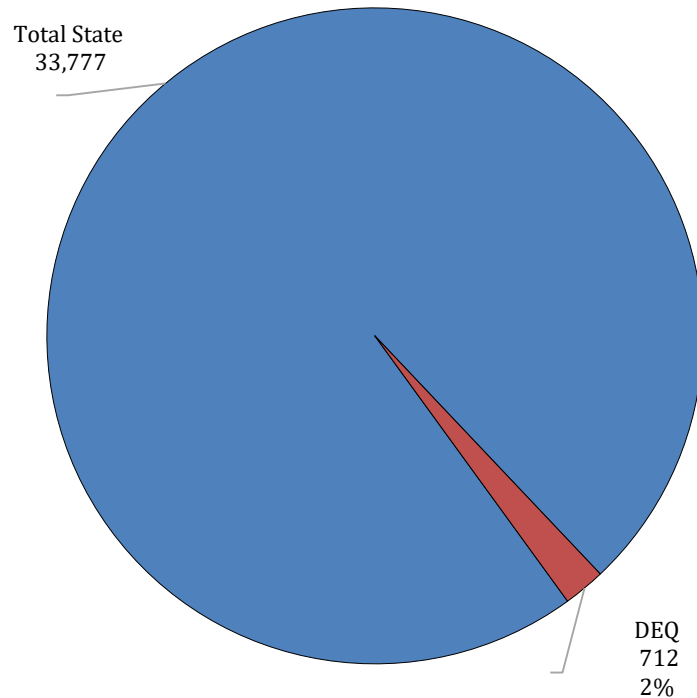
\$826,890	Clean Diesel Grant Federal Funding that will allow DEQ to provide funds for Louisiana Clean Diesel Grant Program for projects that maximize the benefits of diesel emissions reductions by retrofitting, upgrading, replacement, or reduced idling from on-road and off-road diesel engines and equipment.
\$1,000,000	Volkswagen Settlement Disbursement to School Boards and Municipalities.
\$500,000	Brownfield (104)K CWA BIL - The grant will provide lead and asbestos surveys in the targeted area. Over 170 Brownfields have been identified and this grant will focus on the priority sites selected based on community input, readiness for assessment, reuse potential; potential positive impact on Environmental Justice community; potential to spur further revitalization; and site access. These funds are concentrating on 3 targeted areas, Historic Pineville, Shreveport Common, and Downtown Eunice.
\$75,000	EPA 106 Supplemental Permits and Enforcement Grants - Funds will be used to enhance state permit and enforcement programs. Planned use of funds includes expanding on-line permitting capabilities, providing information technology support and services (including purchase of equipment).
\$73,000	American Rescue Plan funded cooperative agreement to provide funding to the Louisiana Department of Environmental Quality (LDEQ) to enhance two mobile air monitoring stations, not currently in use for this project, for deployment to underserved, majority minority areas within the State.
\$112,000	NPS contract match.
\$50,000	Brownfield Revolving Loan Q12.
\$20,400	Contracts using 604(b) Grant Funds to support restoration and protection activities aimed at attaining or maintaining designated uses and water quality standards include revision of existing TMDLs, waste load allocation analysis, water quality permitting planning.
\$1,395,000	Brownfield 128(a) BIL funds CERCLA Sec. 128(a) and Sec 104(b) provides these funds to support LDEQ for the continuation of the establishment and enhancement of its Voluntary Cleanup Program. LDEQ staff will assist eligible applicants to determine if contamination is present, plan for cleanup and assist or oversee cleanup that leads to redevelopment.



Environmental Quality

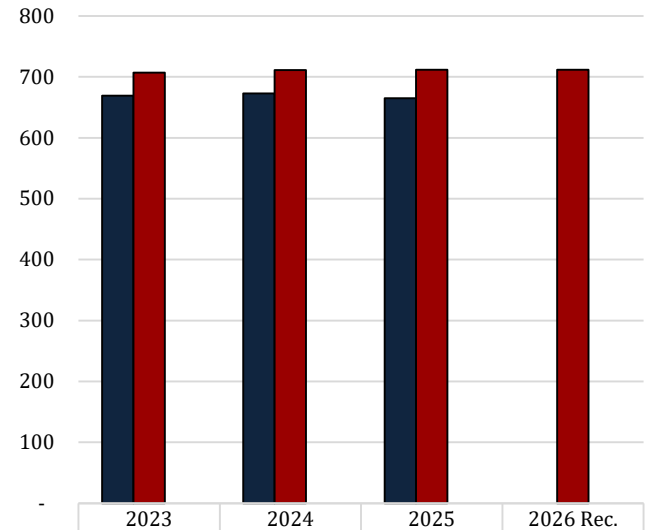
FTEs, Authorized T.O., and Other Charges Positions

**FY26 Recommended Department Positions
as a portion of
FY26 Recommended HB1 Authorized Positions**



FY25 number of funded, but not filled,
positions as of January 2025 = 48

**Number
and
Types
of
Positions**



	2023	2024	2025	2026 Rec.
Total FTEs (1st July Report)	669	673	665	-
Authorized T.O. Positions	707	711	712	712
Other Charges Positions	-	-	-	-

The full-time equivalent or **FTE** definition refers to the number of hours considered full-time. For example, if an agency considers 40 hours full time, and there are two employees working 20 hours per week, those two employees would be 1.0 FTE.

Authorized Positions are those referred to in the Table of Organization (or T.O.) for each department. This count includes only those positions paid for from the Salaries expenditure category for the organization units and agencies included in each department's appropriation. This excludes positions paid for from other expenditure categories, such as wages or per diem.

Other Charges positions are authorized under R.S. 39:2(5)(b) ...

(5)(b) "Authorized other charges positions" means the number of positions in an appropriation bill to be funded by the other charges continuing category of the accounting system for the state. The number may be adjusted during a fiscal year in accordance with law.

- [Act 377 of 2013 by Rep. Burrell]
- Positions coded in the Other Charges expenditure category
- These positions are usually associated with federal grants



Environmental Quality

Related Employment Information

Salaries and Related Benefits for the 712 Authorized Positions are listed below in Chart 1.
In Chart 2, benefits are broken out to show the portion paid for active versus retired employees.
This is where payments for the Unfunded Accrued Liability (UAL) can be found.

1.

Personal Services	2023 Actual	2024 Actual	2025 Enacted	2026 Recommended
Salaries	\$47,103,282	\$47,637,594	\$51,062,280	\$52,983,829
Other Compensation	\$683,110	\$690,422	\$211,043	\$211,043
Related Benefits	\$27,315,700	\$28,349,277	\$27,526,083	\$27,937,520
Total Personal Services	\$75,102,092	\$76,677,293	\$78,799,406	\$81,132,392

Average T.O. Salary = \$71,510

Examples of Other Compensation include pay for WAE employees, part-time employees, student workers, etc.

2.

Related Benefits FY26 Recommended	Total Funding	%
Total Related Benefits	\$27,937,520	
UAL payments	\$12,325,762	44%
Retiree Health Benefits	\$4,653,600	
Remaining Benefits*	\$10,958,158	
Means of Finance	General Fund = 3%	Other = 97%

Department Demographics	Total	%
Gender		
Female	396	56
Male	309	44
Race/Ethnicity		
White	514	73
Black	126	18
Other	65	9
Currently in DROP or Eligible to Retire	124	19

* Remaining Benefits include employer contribution to authorized positions' retirement, health, Medicare, FICA, Emoluments etc. The authorized positions include authorized T.O. positions and authorized other charges positions, both filled and vacant.

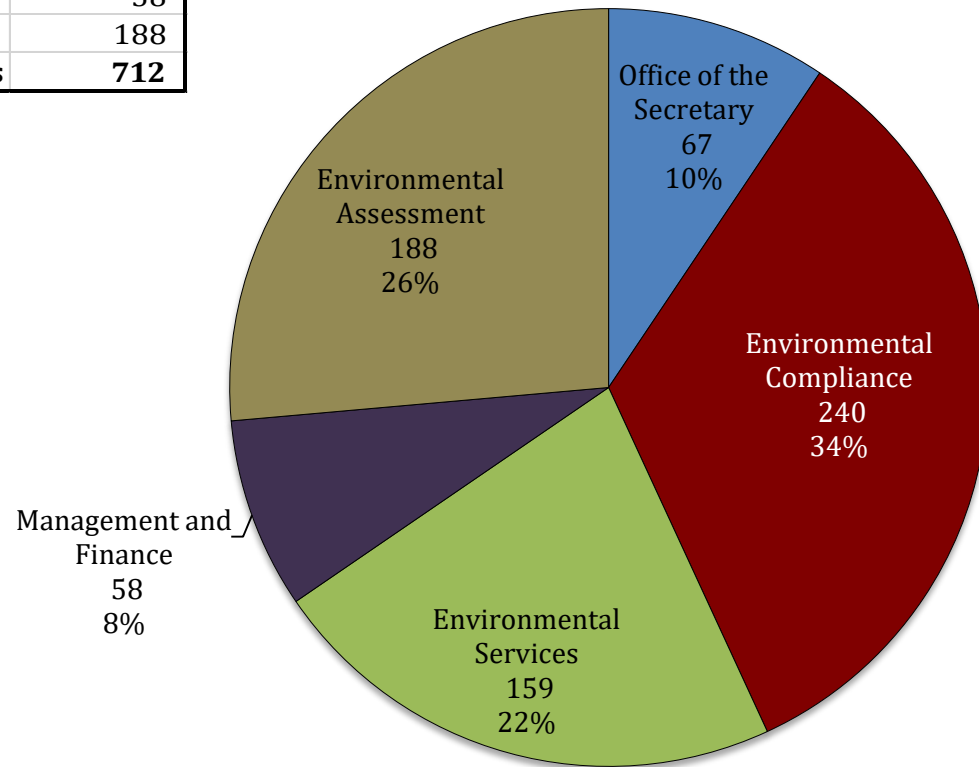
Other Charges Benefits
\$0



Environmental Quality

FY26 Recommended Total Authorized Positions by Agency

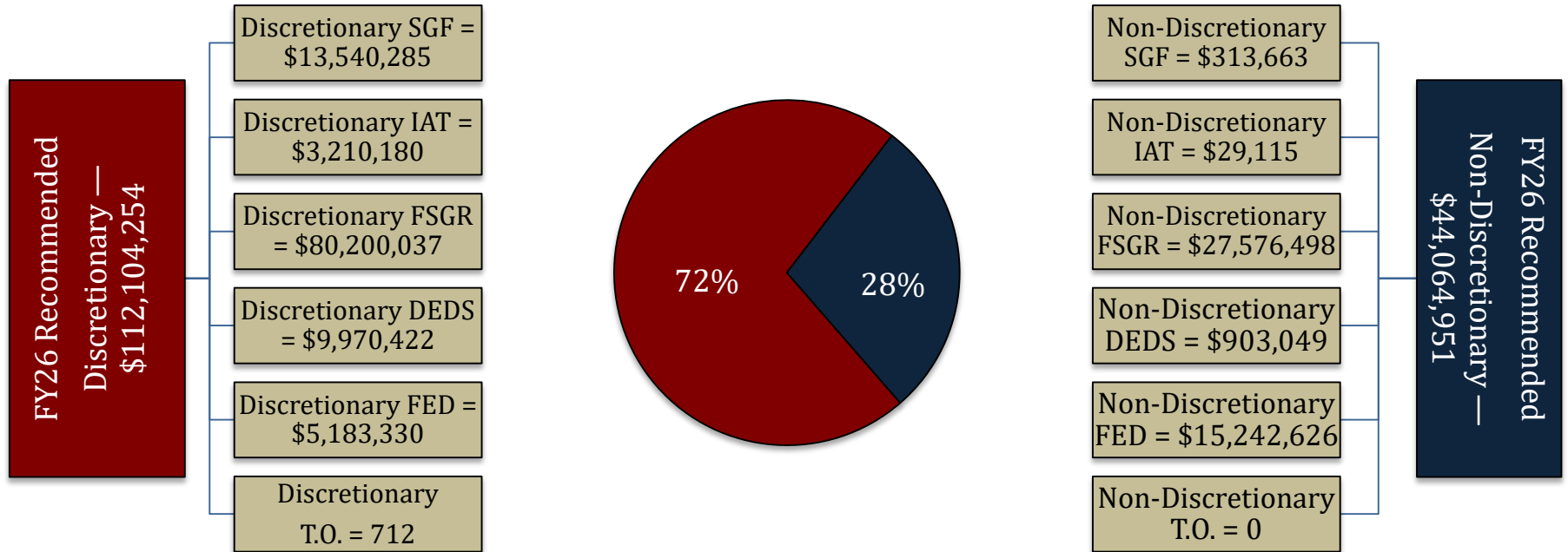
Office of Environmental Quality	
Office of the Secretary	67
Office of Environmental Compliance	240
Office of Environmental Services	159
Office of Management and Finance	58
Office of Environmental Assessment	188
Total Positions	712





Environmental Quality

FY26 Discretionary/Non-Discretionary Comparison



Total Discretionary Funding by Office		
Secretary	\$ 6,544,820	6%
Environmental Compliance	\$ 22,992,120	21%
Environmental Services	\$ 7,606,875	7%
Management and Finance	\$ 52,277,537	47%
Environmental Assessment	\$ 22,682,902	20%
Total Discretionary	\$ 112,104,254	100%

Total Non-Discretionary Funding by Type		
Required by the Constitution	\$ 12,325,762	28%
Needed for Debt Service	\$ 1,721,118	4%
Due to Federal Mandate	\$ 25,167,302	57%
Unavoidable Obligations	\$ 4,850,769	11%
Total Non-Discretionary	\$ 44,064,951	100%

Required by the Constitution = State Retirement Systems UAL
 Unavoidable Obligations = Retirees Group Insurance;
 Legislative Auditor Fees; Maintenance of State-owned Buildings.
 Due to Federal Mandate = PPG Grant, Title V of the Clean Air Act,
 Clean Water Revolving Loan.



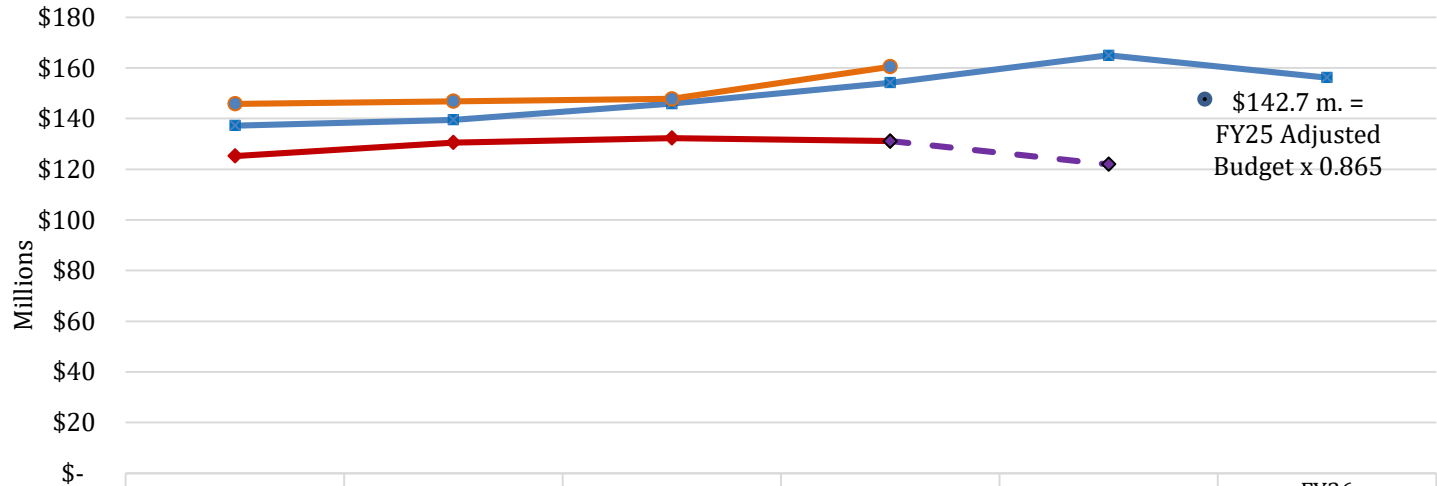
13 – Environmental Quality

Enacted & FYE Budget vs. Actual Expenditures FY21 to FY24

FYE Budget = “Fiscal Year End” Budget includes all in-house and regular BA-7s through June 30 of the fiscal year. For FY25, it is as of January.

**FY25 Known
Supplemental Needs:**
\$0

**FY24 General Fund
Reversions:**
\$0



	FY21	FY22	FY23	FY24	FY25 EOB	FY26 Recommended
Enacted Budget	\$137,264,630	\$139,492,956	\$145,906,085	\$154,181,844	\$164,953,104	\$156,169,205
FYE Budget	\$145,849,917	\$146,870,227	\$147,807,774	\$160,504,483		
Actual Expenditures	\$125,256,322	\$130,535,583	\$132,340,920	\$131,148,247		
FY25 Expenditure Trend				\$131,148,247	\$121,958,517	

Monthly Budget Activity

	FY25 Adjusted Budget	FY25 Aggregate Expenditures	Remaining Budget Authority	Percent Expended To Date
Jul-24	\$ 157,304,290	\$ 7,336,756	\$ 149,967,534	4.7%
Aug-24	\$ 164,953,104	\$ 17,261,357	\$ 147,691,747	10.5%
Sep-24	\$ 164,953,104	\$ 26,742,617	\$ 138,210,487	16.2%
Oct-24	\$ 164,953,104	\$ 42,294,638	\$ 122,658,466	25.6%
Nov-24	\$ 164,953,104	\$ 50,937,699	\$ 114,015,405	30.9%
Dec-24	\$ 164,953,104	\$ 60,835,375	\$ 104,117,729	36.9%
Jan-25	\$ 164,953,104	\$ 71,142,468	\$ 93,810,636	43.1%

Monthly Budget Activity

	FY24 Adjusted Budget	FY24 Aggregate Expenditures	Remaining Budget Authority	Percent Expended To Date
<i>(Trend based on average monthly expenditures to date)</i>				
Feb-25	\$ 164,953,104	\$ 81,305,678	\$ 83,647,426	49.3%
Mar-25	\$ 164,953,104	\$ 91,468,887	\$ 73,484,217	55.5%
Apr-25	\$ 164,953,104	\$ 101,632,097	\$ 63,321,007	61.6%
May-25	\$ 164,953,104	\$ 111,795,307	\$ 53,157,797	67.8%
Jun-25	\$ 164,953,104	\$ 121,958,517	\$ 42,994,587	73.9%

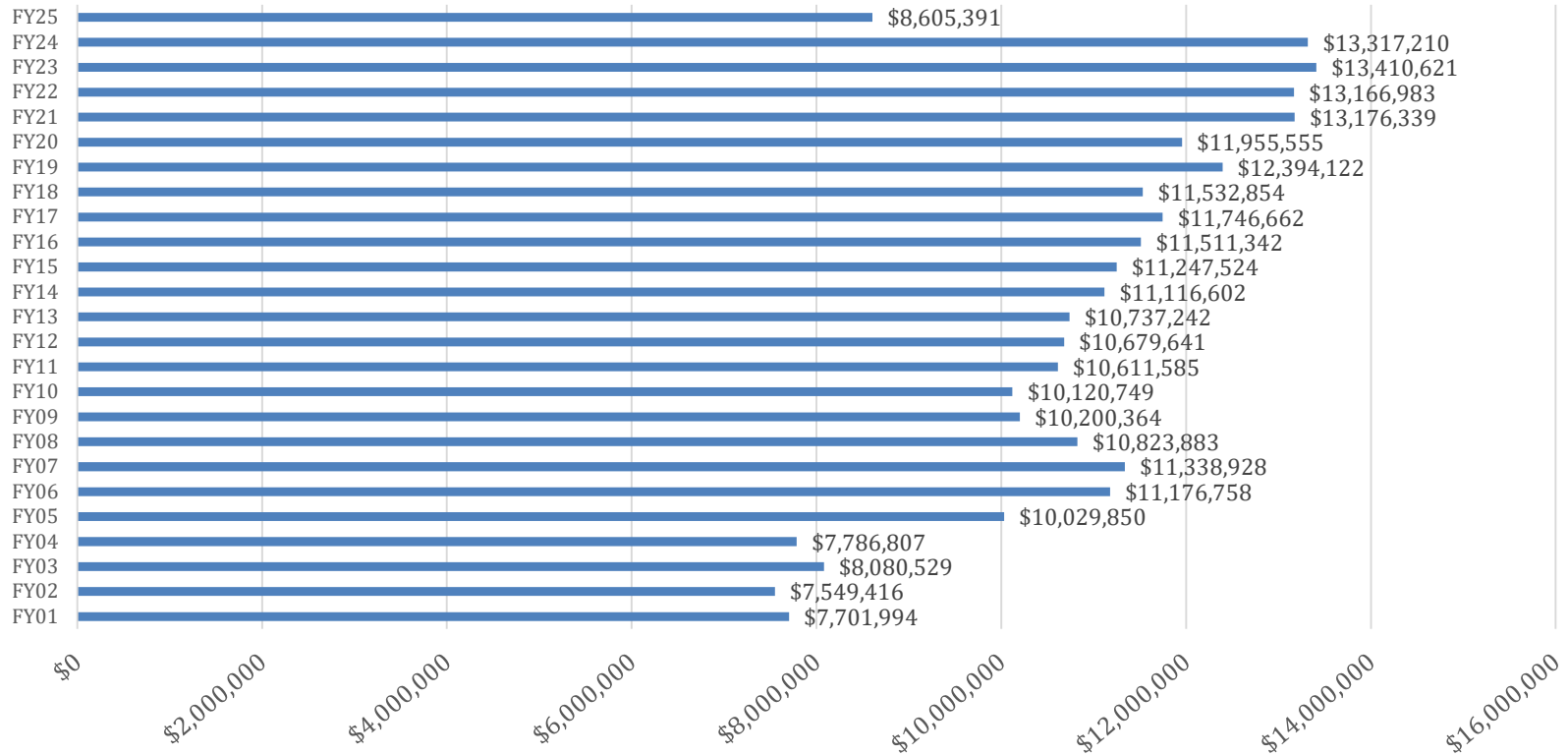
Historical Year End Average

86.5% 20



Department of Environmental Quality

Waste Tire Fee Collection History – FY01 to FY25



Note: Act 846 of the 2004 RLS changed the tires to which the fee was applicable and greatly increased annual tire fee revenues, as shown. See LRS 30:2418.

Note: As of 2/28/25 FY25 collections total \$8.6 million.

Source: Department of Environmental Quality.

Present law provides for a \$5 fee per medium truck tire, and \$10 per off-road tire be collected for every tire sold. **Act No. 541** of the 2018 Regular Session by **Representative Lyons**, increased the fees on passenger/light truck tires from \$2 to \$2.25.